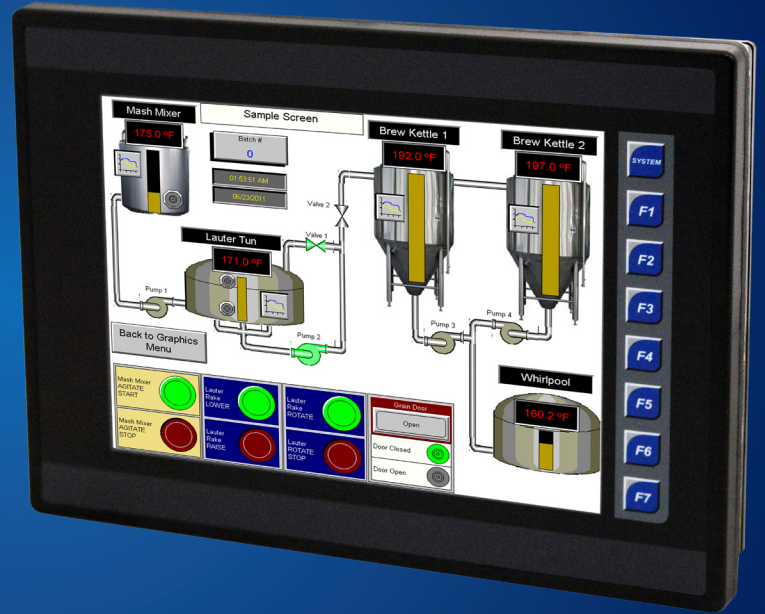


EXL10 OCS

Better Networking, Unparalleled Performance

Pushing the 10" OCS to the next level through dual CAN and dual ethernet, blazing processing speeds, and enhanced video/audio capabilities



- High performance logic controller with online programming
- 10.4" VGA color touchscreen for detailed graphics
- Built-in digital & analog I/O with (2) 500kHz high-speed counters
- Dual 10/100MB (Auto-MDIX) Ethernet for Modbus TCP C/S, HTTP, FTP, SMTP
- USB 2.0 ports for programming and FLASH drive support
- 32GB microSD slot for application updates and virtually unlimited data logging

Dual Ethernet and Dual CAN Standard

The EXL10 provides twice the connectivity of all other products in its class. With two high-speed counters and dual 10/100 Ethernet ports, the EXL10 adds flexibility when linking to factory networks like integrated Web Server, FTP Host, Email functionality, Modbus TCP Master/Slave, program updates, and much more.

Two CAN Ports Put Your Application in Motion

The EXL10 includes two CAN ports. One port utilizes CsCAN for Distributed Plug and Play I/O over a 500m distance. The second port provides support for CANopen and J1939 for mobile applications.

Online Programming & High-Speed USB 2.0

The EXL10 includes two USB 2.0 ports; Host port and an on-the-go port. The Host Port allows connection of removable FLASH drives, supporting drives up to 2TB. EXL10 Online Programming allows the logic program to be modified on-the-fly without entering stop mode.

Flexible, Built-In I/O

The display benefits end-users by providing high outdoor visibility and allowing the EXL10 to be used in a variety of ambient lighting conditions.

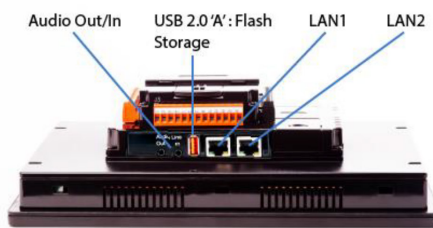
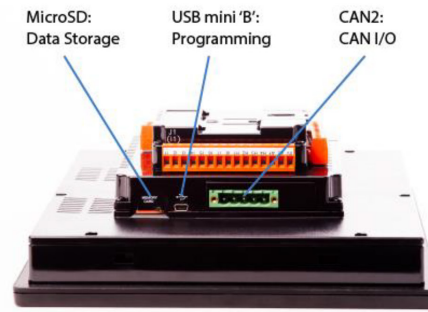
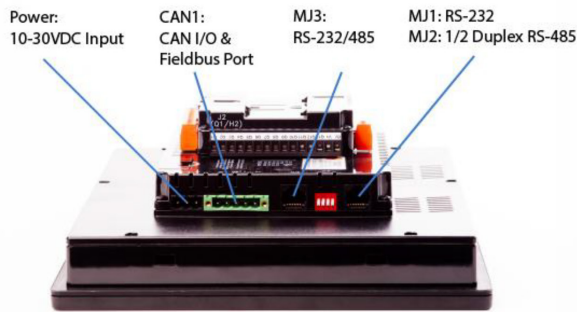
In addition to exceptional display performance, the EXL10 contains a powerful logic engine with built-in digital and analog I/O and online programming capability.



Class I, Division 2
Groups A, B, C, D
Type 4X

EXL10 Specifications

General Specifications		Control & Logic Specifications	
Required Power (steady state)	150mA @ 24Vdc	Control Language Support	Adv. Ladder & Full IEC 1131-3
Primary Power Range	10-30Vdc	Logic Size (scan rate)	1MB, max (0.013mS/K)
Relative Humidity	5 to 95% Non-condensing	Online Programming	Supported in Adv. Ladder
Operating Temp	-40 to +60°C	I/O References Supported	4096 Digital & 1024 Analog
Storage Temp	-40 to +70°C	General Purpose References	50,000 Words & 32,768 bits



EXL10 Model Numbers

Part #	Description
HE-EXV1E0	No Built-in I/O
HE-EXV1E2	12 DC In, 6 Relay Out, 4 - 12-bit Analog In
HE-EXV1E3	12 DC In, 12 DC Out, 2 - 12-bit Analog In
HE-EXV1E4	24 DC In, 16 DC Out, 2 - 12-bit Analog In
HE-EXV1E5	12 DC In, 12 DC Out, 2 - 14/16-bit Analog In (mA/V/Tc/mV/RTD), 2 - 12-bit Analog Out
HE-EXV1E6	12 DC In, 12 DC Out, 6 - 14/17-bit Analog In (mA/V/Tc/mV/RTD), 4 - 12-bit Analog Out



HE-XCK Programming Cable Kit Includes
 USB to Mini USB Adapter Cable
 USB to RS-232 Serial Adapter Cable
 RS-232 Serial to RJ45 Ethernet Adapter Cable

Expansion & Remote I/O and Accessories



SmartRail Modular I/O



SmartStix Terminal Block I/O



SmartBlock Speciality I/O



XL Series COM Options

