



Air Cylinder Series CJ1

Double Acting: $\phi 4$ /Single Acting Spring Return: $\phi 2.5, \phi 4$

Variations

Series	Action	Bore size (mm)	Standard stroke (mm)	Page
Standard Series CJ1 	Double acting	Single rod 4	5, 10, 15, 20	1.1-2
	Single acting	Single rod Spring return 2.5 4	5, 10 5, 10, 15, 20	1.1-4

CJ1

CJP

CJ2

CM2

C85

CG1

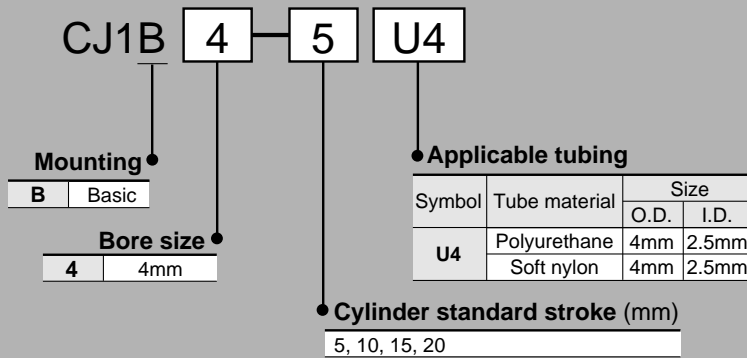
MB

C95

CA1

CS1

How to Order/Double Acting



Refer to p.1.1-4 and 1.1-5 for single acting style.

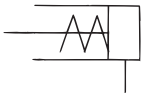
Air Cylinder/Single Acting (Spring Return)

Series CJ1

ø2.5, ø4



Symbol
Single acting/Spring return



Spring Retracting Force (N)

Bore size (mm)	Extended position	Retracted position
2.5	1.13	0.64
4	3.04	1.47

Weight (g)

Bore size (mm)	5	10	15	20
2.5	1.5	2	—	—
4	3.7	4.6	5.6	6.5

⚠ Precautions

Be sure to read before handling.
Refer to p.0-39 to 0-42 for Safety
Instructions and common precautions.

Piping

⚠ Caution

- Do not forcibly connect piping that could apply a lateral force to the cylinder tube, as this could cause the cylinder tube to tilt and lead to a malfunction.

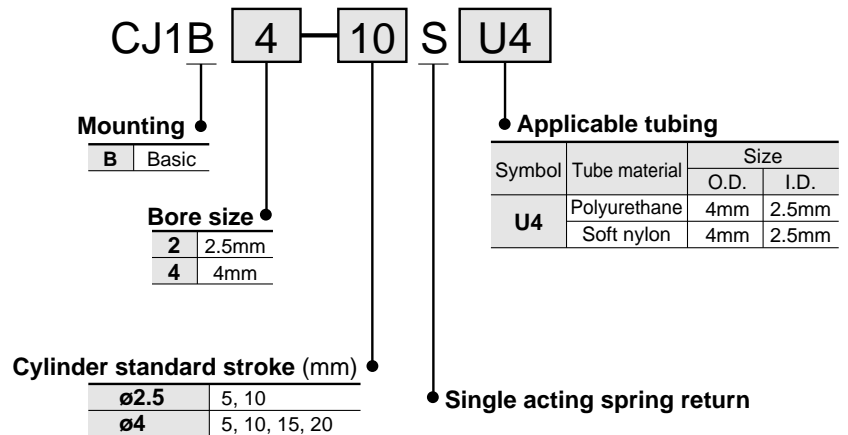
Mounting

⚠ Caution

- Do not operate with a load applied to the piston rod during retraction. The spring that is built into the cylinder provides only enough force to retract the piston rod. Thus, if a load is applied, the piston rod will not be able to retract to the end of the stroke.
- Do not install by grasping the cylinder tube, as this could cause the tube to deform and lead to a malfunction.

1.1-4

How to Order/Single Acting



Specifications

Action	Single acting spring return
Fluid	Air
Proof pressure	1.05MPa
Max. operating pressure	0.7MPa
Min. operating pressure	0.3MPa
Ambient and fluid temperature	-10 to 70°C (Non-freezing)
Operating piston speed	50 to 500mm/s
Cushion	None
Thread tolerance	JIS 2 class
Stroke tolerance	+0.5 0
Mounting	Basic style
Lubrication	Not required (Non-lube)

Model/Cylinder Bore Size/Standard Strokes

Model	Bore size (mm)	Standard stroke (mm)
CJ1B2	2.5	5, 10
CJ1B4	4	5, 10, 15, 20

Applicable Tubing

Tubing	Material	Size		Model No.
		O.D.	I.D.	
Metric size	Polyurethane	4mm	2.5mm	TU0425
	Soft nylon	4mm	2.5mm	TS0425

Theoretical Force (N)

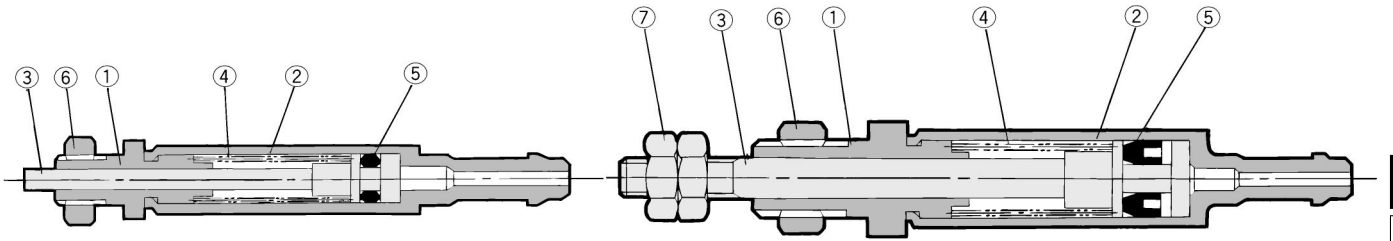
Bore size (mm)	Rod size (mm)	Operating direction	Piston area (mm ²)	Operating pressure				
				0.3	0.4	0.5	0.6	0.7
2.5	1	OUT	4.9	0.34	0.83	1.32	1.81	2.30
		IN	—	0.64				
4	2	OUT	12.6	0.74	2.00	3.26	4.52	5.78
		IN	—	1.47				

Air Cylinder/Single Acting (Spring Return) *Series CJ1*

Construction

CJ1B2-□SU4

CJ1B4-□SU4



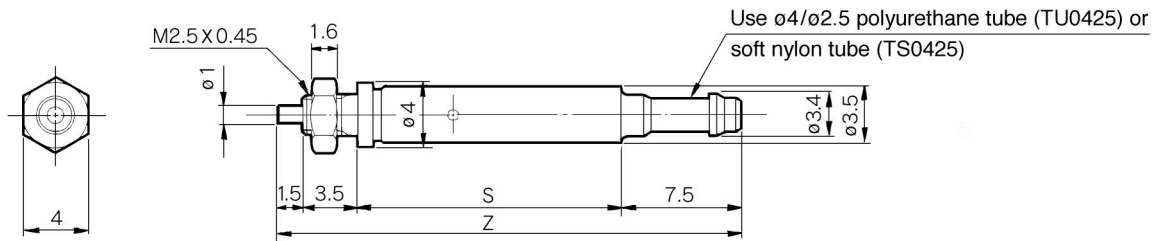
Component Parts

(Impossible to disassemble)

No.	Description	Material	Note
①	Rod cover	Brass	Electroless nickel plated
②	Cylinder tube	Brass	Electroless nickel plated
③	Piston rod	Stainless steel	
④	Spring	Stainless steel wire	
⑤	Piston seal	NBR	
⑥	Mounting nut	Brass	Black zinc chromate
⑦	Rod end nut	Steel	Electroless nickel plated

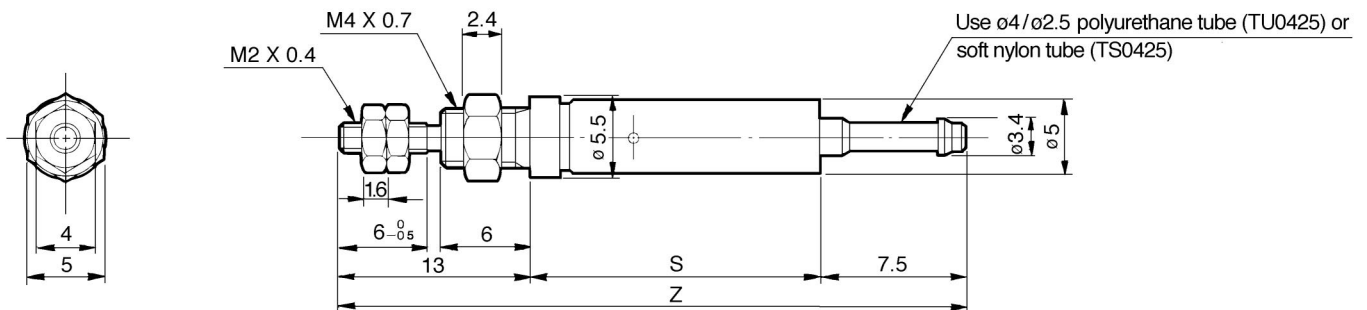
Dimensions: Basic style

Bore size: $\phi 2.5$ /CJ1B2-□SU4



Bore (mm)	Symbol Stroke	S		Z	
		5	10	5	10
2.5		16.5	25.5	29	38

Bore size: $\phi 4$ /CJ1B4-□SU4



Bore (mm)	Symbol Stroke	S				Z			
		5	10	15	20	5	10	15	20
4		19.5	28.5	37.5	46.5	40	49	58	67

World Wide SMC Support...

North American Branch Offices For a branch office near you call: 1-800-SMC-SMC1 (762-7621)

SMC Pneumatics Inc. (Atlanta) 1440 Lakes Parkway, Suite 600 Lawrenceville, GA 30043 Tel: (770) 624-1940 FAX: (770) 624-1943	SMC Pneumatics Inc. (Cleveland) 2305 East Aurora Rd., Unit A-3 Twinsburg, OH 44087 Tel: (330) 963-2727 FAX: (330) 963-2730	SMC Pneumatics Inc. (Milwaukee) 16850 W. Victor Road New Berlin, WI 53151 Tel: (414) 827-0080 FAX: (414) 827-0092	SMC Pneumatics Inc. (Richmond) 5377 Glen Alden Drive Richmond, VA 23231 Tel: (804) 222-2762 FAX: (804) 222-5221
SMC Pneumatics Inc. (Austin) 2324-D Ridgpoint Drive Austin, TX 78754 Tel: (512) 926-2646 FAX: (512) 926-7055	SMC Pneumatics Inc. (Columbus) 3687 Corporate Drive Columbus, OH 43231 Tel: (614) 895-9765 FAX: (614) 895-9780	SMC Pneumatics Inc. (Mnpls.) 990 Lone Oak Road, Suite 162 Eagan, MN 55121 Tel: (651) 688-3490 FAX: (651) 688-9013	SMC Pneumatics Inc. (Rochester) 245 Summit Point Drive Henrietta, NY 14467 Tel: (716) 321-1300 FAX: (716) 321-1865
SMC Pneumatics Inc. (Boston) Zero Centennial Drive Peabody, MA 01960 Tel: (978) 326-3600 Fax: (978) 326-3700	SMC Pneumatics Inc. (Dallas) 12801 N. Stemmons Frwy, Ste. 815 Dallas, TX 75234 Tel: (972) 406-0082 FAX: (972) 406-9904	SMC Pneumatics Inc. (Nashville) 5000 Linbar Drive, Suite 297 Nashville, TN 37211 Tel: (615) 331-0020 FAX: (615) 331-9950	SMC Pneumatics Inc. (S.F.) 85 Nicholson Lane San Jose, CA 95134 Tel: (408) 943-9600 FAX: (408) 943-9111
SMC Pneumatics Inc. (Charlotte) 5029-B West W.T. Harris Blvd. Charlotte, NC 28269 Tel: (704) 597-9292 FAX: (704) 596-9561	SMC Pneumatics Inc. (Detroit) 2990 Technology Drive Rochester Hills, MI 48309 Tel: (248) 299-0202 FAX: (248) 293-3333	SMC Pneumatics Inc. (Newark) 3434 US Hwy. 22 West, Ste. 110 Somerville, NJ 08876 Tel: (908) 253-3241 FAX: (908) 253-3452	SMC Pneumatics Inc. (St. Louis) 4130 Rider Trail North Earth City, MO 63045 Tel: (314) 209-0080 FAX: (314) 209-0085
SMC Pneumatics Inc. (Chicago) 27725 Diehl Road Warrenville, IL 60555 Tel: (630) 393-0080 FAX: (630) 393-0084	SMC Pneumatics Inc. (Houston) 9001 Jameel, Suite 180 Houston, TX 77040 Tel: (713) 460-0762 FAX: (713) 460-1510	SMC Pneumatics Inc. (Phoenix) 2001 W. Melinda Lane Phoenix, AZ 85027 Tel: (623) 492-0908 FAX: (623) 492-9493	SMC Pneumatics Inc. (Tampa) 8507-H Benjamin Road Tampa, FL 33634 Tel: (813) 243-8350 FAX: (813) 243-8621
SMC Pneumatics Inc. (Cincinnati) 4598 Olympic Blvd. Erlanger, KY 41018 Tel: (606) 647-5600 FAX: (606) 647-5609	SMC Pneumatics Inc. (L.A.) 14191 Myford Road Tustin, CA 92780 Tel: (714) 669-1701 FAX: (714) 669-1715	SMC Pneumatics Inc. (Portland) 14107 N.E. Airport Way Portland, OR 97230 Tel: (503) 252-9299 FAX: (503) 252-9253	SMC Pneumatics Inc. (Tulsa) 10203 A East 61st Street Tulsa, OK 74146 Tel: (918) 252-7820 FAX: (918) 252-9511

Europe
ENGLAND
SMC Pneumatics (U.K.) Ltd.
GERMANY
SMC Pneumatik GmbH
ITALY
SMC Italia SpA
FRANCE
SMC Pneumatique SA
HOLLAND
SMC Controls BV
SWEDEN
SMC Pneumatics Sweden AB
SWITZERLAND
SMC Pneumatik AG
AUSTRIA
SMC Pneumatik GmbH
SPAIN
SMC España, S.A.
IRELAND
SMC Pneumatics (Ireland) Ltd.
Asia
JAPAN

SMC Corporation
KOREA
SMC Pneumatics Korea Co., Ltd.
CHINA
SMC (China) Co., Ltd.
HONG KONG
SMC Pneumatics (Hong Kong) Ltd.
SINGAPORE
SMC Pneumatics (S.E.A.) Pte. Ltd.
PHILIPPINES
SMC Pneumatics (Philippines), Inc.
MALAYSIA
SMC Pneumatics (S.E.A.) Sdn. Bhd.
TAIWAN
SMC Pneumatics (Taiwan) Co., Ltd.
THAILAND
SMC Thailand Ltd.
INDIA
SMC Pneumatics (India) Pvt., Ltd.
North America
CANADA
SMC Pneumatics (Canada) Ltd.
MEXICO
SMC Pneumatics (Mexico) S.A. de C.V.

South America
ARGENTINA
SMC Argentina S.A.
CHILE
SMC Pneumatics (Chile) Ltda.

Oceania
AUSTRALIA
SMC Pneumatics (Australia) Pty. Ltd.
NEW ZEALAND
SMC Pneumatics (N.Z.) Ltd.

SMC offers the same quality and engineering expertise in many other pneumatic components

Valves Directional Control Valves Manual Valves Mufflers Exhaust Cleaners Quick Exhaust Valves	Valves Proportional Valves Mechanical Valves Miniature Valves Fluid Valves	Cylinders/Actuators Compact Cylinders Miniature Cylinders Rodless Cylinders Rotary Actuators Pneumatic Grippers	Vacuum Vacuum Ejectors Vacuum Accessories Instrumentation Pneumatic Positioners Pneumatic Transducers	Air Preparation Equipment Filters-Regulators-Lubricators Coalescing Filters Micro Mist Separators Fittings Air Fittings
--	---	---	--	--

SMC Pneumatics Inc.

P.O. Box 26640, Indianapolis, IN 46226
Tel: (317) 899-4440 • FAX: (317) 899-3102