



PILOT DEVICES - MODULAR PLASTIC - EMERGENCY STOP

Product application guide

Emergency stop pushbutton assembly

ABB continuously improves the customers' selection experience for all equipment and services. This guide covers Emergency stop pushbutton assembly configurations for MPM and MPE types.

Introduction

This document gives an accurate graphical indication on the Emergency stop pushbutton configuration assembly compliant with IEC 60947-5-5: Control circuit devices and switching elements – Electrical emergency stop device with mechanical latching function.

Detailed guide

ABB offers two versions of Emergency stop actuators: non illuminated – MPE and illuminated MPM types. There is a choice of 30, 40 and 60 mm “mushroom” actuators available with a key, twist or pull release option (picture 1). Only the indicated types of actuators may be used (i.e. MPE and MPM).



Picture 1. MPET3, MPEK3, MPET4 and MPMP4 actuators

The Emergency stop actuator must always be accompanied with the 3-position contact block holder only (picture 2).



Important! 5-position holder MCBH5-00 must not be used for Emergency stop applications.

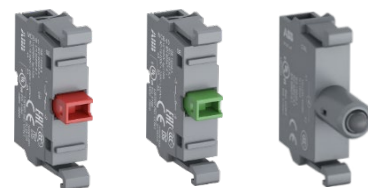


Picture 2. MCBH-00, 3-position holder

The holder must be fitted with MCB standard contact blocks only, and optionally MLBL LED lighting block is allowed (picture 3).

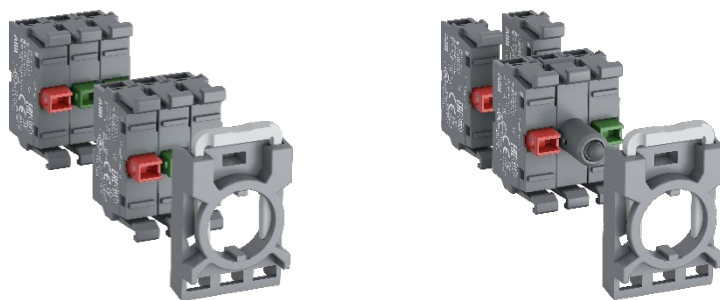


Important! Micro switch contact block MCBL must not be used for Emergency stop application.



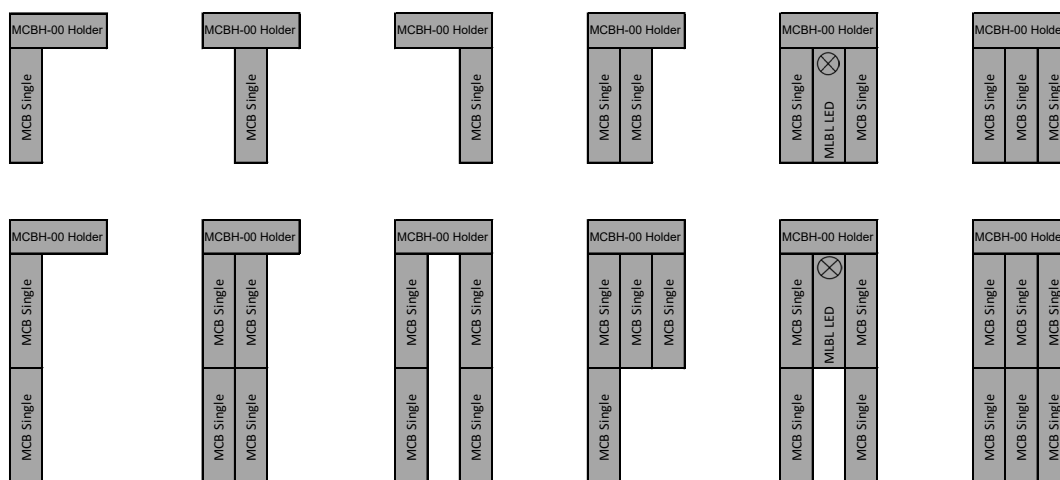
Picture 3. MCB-01, MCB-10 contact blocks and MLBL-00W LED lighting block

Maximum capacity for non-illuminated assembly configuration is 6 contact blocks (2 levels by three blocks), while Illuminated configuration offers maximum 4 contact blocks plus one LED module. Example of the maximum errorless configuration is shown on picture 4.



Picture 4. Non-illuminated assembly configuration with 6 contact blocks and Illuminated configuration with 4 contact blocks

Some other, commonly used, patterns are shown in picture 5.



Picture 5. Examples

For further information, please scan the following QR code.



**Pilot Devices Product Management
Motor Starting & Safety**



While every effort has been taken to ensure the accuracy of the information contained in this document ABB cannot accept responsibility for errors or omissions and reserves the right to make changes and improvements without notice. Performance data given in this document is provided as a guide for the user in determining suitability and does not constitute a warranty.