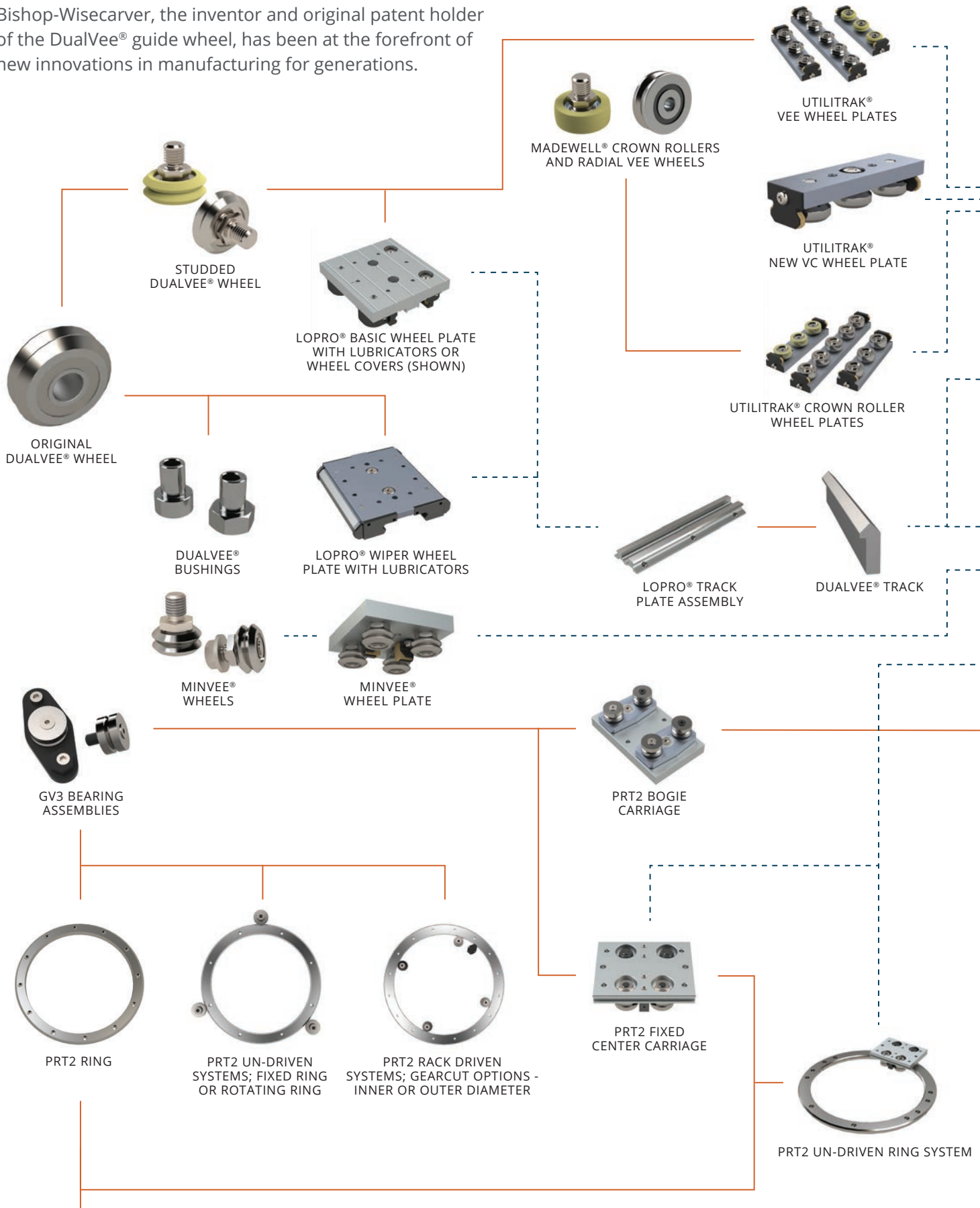


PRODUCTS AND SYSTEMS



PRODUCT EVOLUTION CHART

Bishop-Wisecarver, the inventor and original patent holder of the DualVee® guide wheel, has been at the forefront of new innovations in manufacturing for generations.



UTILITRAK® VEE CHANNEL

UTILITRAK® VEE WHEEL GUIDE

UTILITRAK® C CHANNEL

UTILITRAK® CROWN ROLLER GUIDE

ACCESSORIES

UTILITRAK® PW, VC, SW SERIES BRIDGE KITS

UN-DRIVEN LOPRO® SYSTEMS

DRIVEN LOPRO® SYSTEMS: BELT, LEAD SCREW, BALL SCREW, CHAIN

SERVO MOTORS

COMPLETE SOLUTION LOPRO® X-Y-Z GANTRY SYSTEM BELT AND LEAD SCREW

DUALVEE® DOUBLE EDGE TRACK

MINVEE® LINEAR SLIDE

Signature Motion Linear Actuators®

GV3 DOUBLE EDGE STRAIGHT SLIDES

QUICKTRAK® DOUBLE EDGE

QUICKTRAK® SINGLE EDGE

PRT2 GEARCUT OPTIONS: INNER OR OUTER DIAMETER

PRT2 RING SEGMENTS

PRT2 UN-DRIVEN OVAL/ RECTANGULAR AND CURVED CHANNEL SYSTEM

SLICKSTICK™

ECO60™

XLA™

STEADYRAIL™

COMPLETE SOLUTION DTS DRIVEN CHANNEL SYSTEM; OVAL, CIRCUIT, RECTANGULAR CIRCUIT



BISHOP-WISECARVER

Ingenuity That Endures

Powered by nearly 70 years of relentless problem-solving and steadfast reliability, Bishop-Wisecarver delivers innovative motion solutions around the world that thrive in harsh and extreme conditions. As a global leader in linear and rotary guide systems (both manual and actuated), Bishop-Wisecarver has the exact right solution for your needs.

WHY BISHOP-WISECARVER?

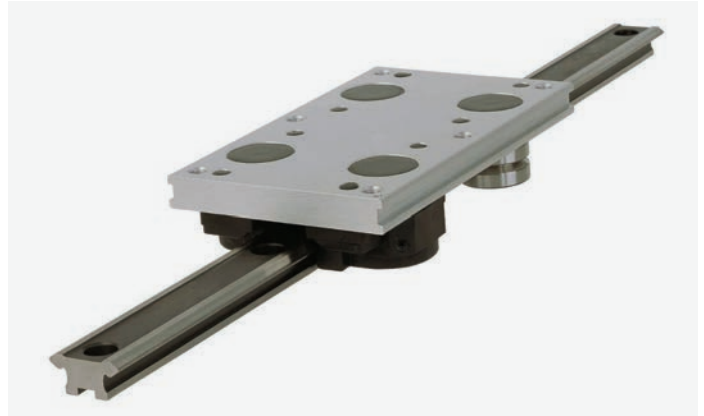
Our Deep Engineering & Technical Expertise

With our roots as a custom machine builder, our rich knowledge, relentless ingenuity, and technical expertise permeate all we do. We integrate mechanical, electrical and software engineering to deliver custom mechatronic solutions. This holistic approach provides you a faster time to market and increased revenues. We also simplify your complex electrical-mechanical subassemblies to provide you a single-source solution from prototype to full production, resulting in a significant cost savings. And we always offer custom engineering services and technical expertise in motion, sensor and actuator integration, real-time software development and electromechanical modeling and design, even for one system.

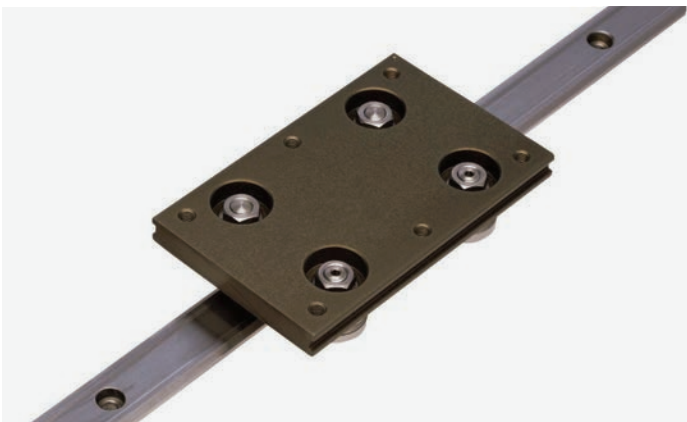
COMPONENTS & ACCESSORIES



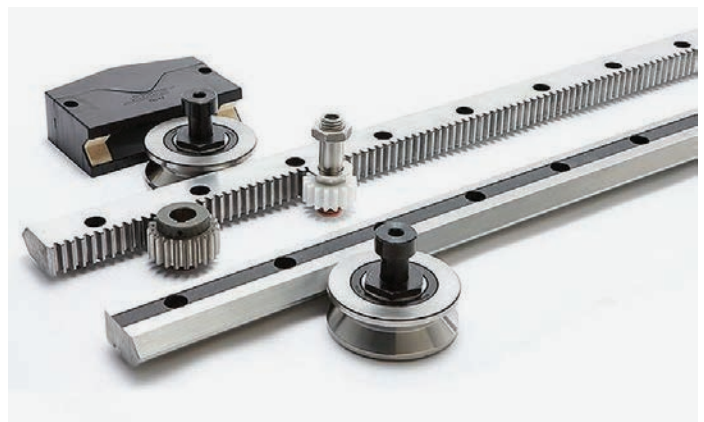
DualVee®: A reliable, smooth anti-friction motion solution, DualVee® is unparalleled for long, fast and extremely contaminated environments. Available in carbon, stainless steel, or polymer.



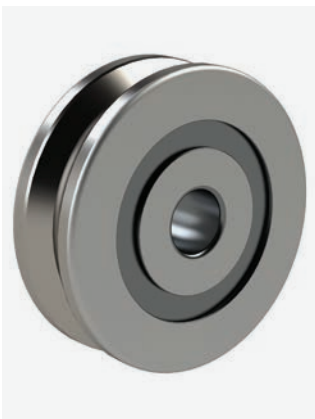
GV3: A linear motion system using a vee wheel design and a double-edged vee rail. Consisting of two single-row bearings, the GV3 is capable of supporting misaligned applications.



SL2: A guide in the GV3 family, the SL2 is made of stainless steel track and wheels combined with an aluminum alloy carriage. An ideal solution where corrosion resistance is needed.



HDS2: A heavy-duty linear motion system configurable to multi-axis systems. Ideal for gantry applications, the HDS2 is standard in stainless steel and is available with a rack drive option built-in.



MadeWell® Radial Wheels



MadeWell® Crown Wheel



High Temp, Low Temp, Washdown, and Vacuum Bearings



MCS Aluminum Extrusion

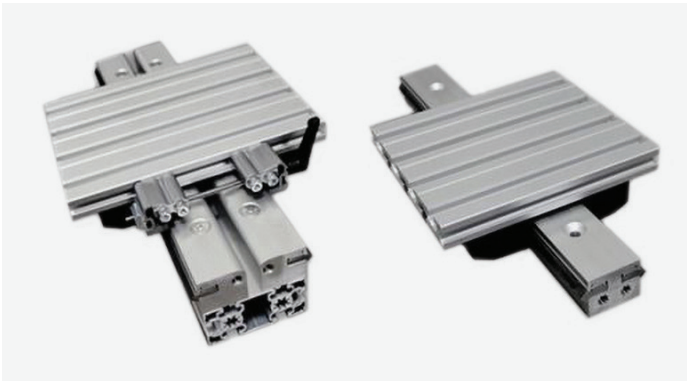
MANUAL LINEAR GUIDE SYSTEM



UtiliTrak®: A compact linear guide that offers smooth manual motion incorporating crown or vee rollers with a ground open or C-channel profile. Ideal for applications with misalignment.



MinVee®: A compact double-edged vee solution suitable for applications in the medical, semiconductor or lab automation industries. Available in carbon or stainless steel.



QuickTrak®: A linear motion system using DualVee® components mounted with T-nuts into an extrusion. A patented process, this solution can be customized without additional machining.



Simple Select®: A linear guide in the GV3 family offering a lower-cost version of the linear system. With unground surfaces and coated with black oxide, the Simple Select product is an easy-to-use component-based system for manual applications.



DualVee®



HTS



GV3



SL2



HDS2



MHD



UTILITRAK® VC:

The UtiliTrak® VC series utilizes an innovative crown/vee roller design. This unique design allows for the handling of some misalignment while also tolerating some debris. Moreover, bills of materials can be reduced since it can run in an open or C channel profile.

NEW

ACTUATED LINEAR GUIDE SYSTEMS



LoPro®: A signature product of BWC, the LoPro® actuator uses the DualVee® wheel and track technology. Available in belt, screw or chain driven options, this is ideal for long applications and harsh environments.



SlickStick™: An entry-level actuator for lower speeds and smaller loads, the SlickStick™ incorporates a lead screw and plastic bushings. Its compact design and myriad of options make it suitable for simple applications.



ECO60™: A more robust version of the SlickStick™, the ECO60™ offers the ability to carry higher loads and accuracy with longer lengths. Configurable for multi-axis with multiple motor mount options and brackets available.



SBD: An enclosed belt-driven system using profile rail guides. Offering higher capacity and a high-strength toothed belt, the enclosed actuator allows for the handling of contaminants.



XLA™



HDLS



HDCS



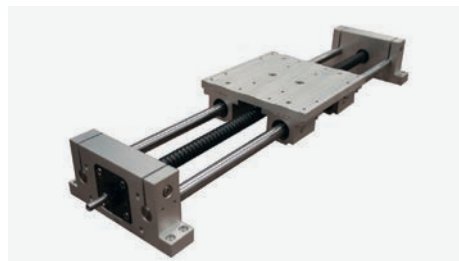
PDU2



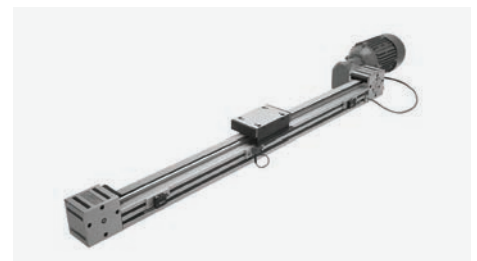
DAPDU2



PSD



SteadyRail™

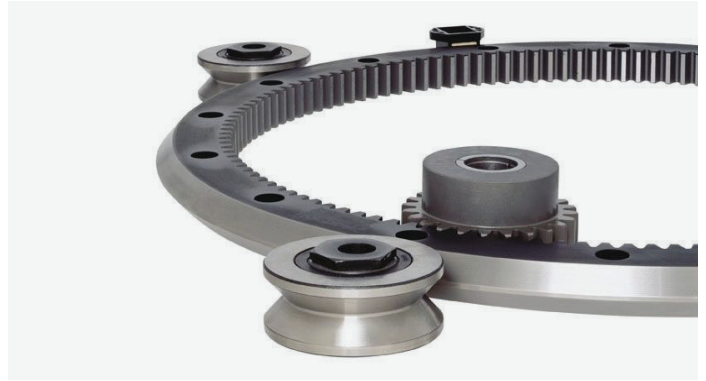


DLS

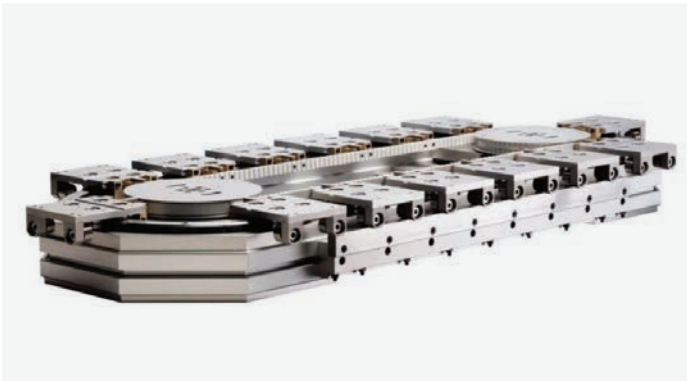
ROTARY GUIDE SYSTEMS



PRT2: A rotary version of GV3 that can be made up to a single ring size of 1.8m. This product is also available in segments creating rings with unlimited diameters. Full rings available in carbon or stainless steel.



HDRT: A heavy-duty version of the PRT2 with load capacity in the tonnes. This product is also available with a gear cut option and stainless steel versions.



DTS: A rectangular or oval track system with integrated carriages linked with a timing belt. This complex system is an excellent solution for assembly applications.



GFX: A track system that can be used only with Beckhoff Automation controls. Using linear servo technology, GFX offers high-speed operation and is ideal for packaging applications.



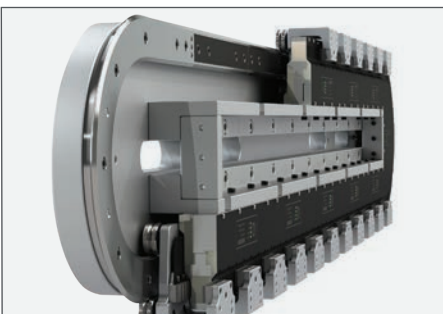
ALR Ring Set



DTS2



1-Track



GFX:

The GFX product is the track system for the Beckhoff Extended Transport System (XTS). The HepcoMotion track portion allows for high-speed operation and long durable life. The combination of the Beckhoff controls with the Hepco track system is being well received by manufacturers who are looking to improve productivity with the ability to make changes on the fly.

NEW

WE ALWAYS DELIVER A SIGNATURE EXPERIENCE

At Bishop-Wisecarver, we infuse our in-house engineering and design expertise with resourcefulness and grit to come up with reliable solutions that get the job done. But what makes Bishop-Wisecarver truly special is our commitment to seeing the world from your point of view. In fact, we promise to listen carefully, ask questions throughout, and thoughtfully consider your complex and unique needs before designing your solution.



MOTION SOLUTIONS FROM BISHOP-WISECARVER ARE LIMITED ONLY BY YOUR IMAGINATION

Components & Accessories

DualVee®
MadeWell®
GV3
SL2
PRT2
HDS2
HDRT
Hepco High Temp and Vacuum Bearing
MCS
Motor Mounts
Gantry Brackets
Wrenches

Manual Linear Guide Systems

DualVee®
UtiliTrak®
MinVee®
QuickTrak®
GV3
Simple Select®
SL2
HDS2
MHD
HTS

Actuated Linear Guide Systems

LoPro®
XLA™
ECO60™
SlickStick™
SteadyRail™
HDLS
HDCS
PDU2
DAPDU2
SBD
PSD
SDM
DLS

Rotary Guide Systems

PRT2
DTS2
DTS
ALR
HDRT
1-Trak
GFX

Custom Solutions

Extruded Profile Guides
Custom Bearings
Custom Subassemblies
Engineering Services
Large Diameter Ring Guides and Track

BWC.COM

Contact

Phone: **(925) 439-8272**

Email: **Sales@bwc.com**

2104 Martin Way
Pittsburg, CA 94565