

MG10

Release notes



Introduction

The new MG10 is an electric magnetic gripper that further extends the all-electric portfolio of OnRobot. The built-in intelligence with adjustable force and part detection ensures reliable handling of a wide range of part sizes and weights, from destacking of thin metal sheets to demanding payloads of up to 10 kg.

Items

Devices

Item no.	Description	Sales price (\$)	Available from
105202	MG10	1.495	Mar. 11 th 2021

Spare parts

Item no.	Description	Sales price (\$)	Available from
107332	MG10 Fingertip set 20-65	85	Mar. 11 th 2021
107333	MG10 Protection pads	40	Mar. 11 th 2021

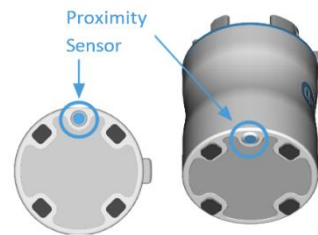
Functionalities

Hardware

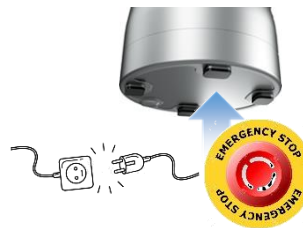
- Powerful electric magnetic gripper that can handle demanding payloads of up to 10 kg



- Built-in proximity sensor to automatically detect the workpiece (Smart Grip) and integrated part detected/lost signal ensures robustness



- Safe grip that holds the workpiece even in case of power loss or E-stop ensures safe and reliable operation



- Works with flat objects out-of-the-box and includes exchangeable fingertips for handling of cylindrical objects



- Designed to operate in harsh environments due to the completely sealed mechanical design

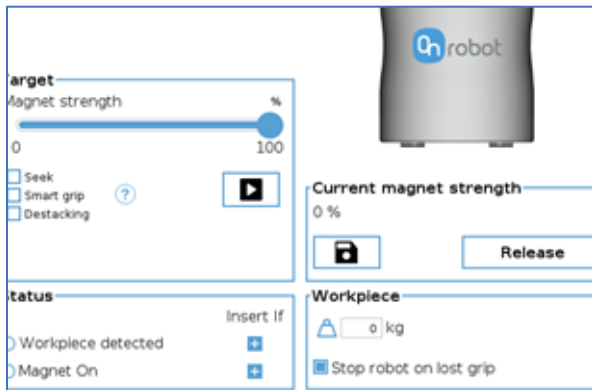


Software

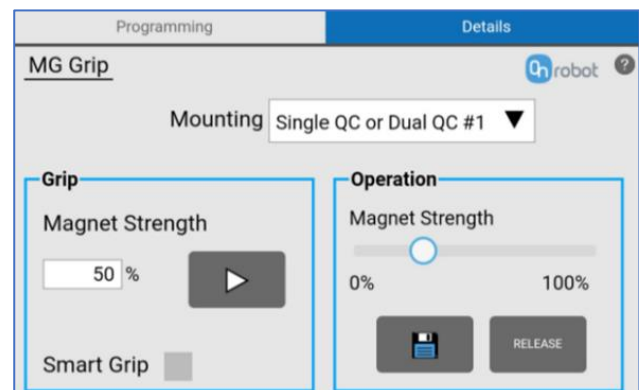
Easy-to-use plugins to the robot UI available for a wide range of cobots:

- Universal Robots
- Techman
- Omron TM
- Hanwha
- Kassow
- Fanuc CRX

Robot scripts available for all other supported robot brands.



URcap plugin



Fanuc CRX plugin

Software requirements:

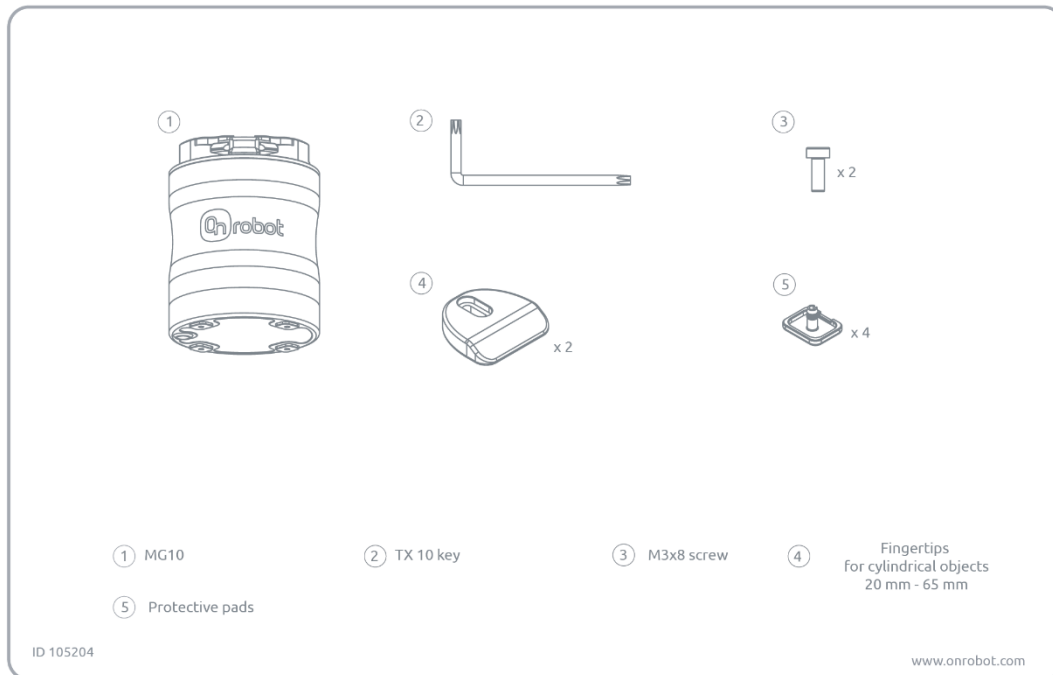
- Compute Box / Eye Box version: 5.7.0.7
- Universal Robots URcap version: 5.7.1
- Techman TMFlow Component version: 1.7.0
- OMRON TM TMFlow Component version: 1.7.0
- Hanwha Rodi X plugin version: 5.7.0
- KUKA installer version: 5.7.0
- Kassow CBUN version: 5.7.0
- FANUC CRX Plugin version (for MG10): 1.0.0
- EPSON v5.7.0
- Scripts version: 1.7.0 (ABB, Denso, FANUC, Kawasaki, KUKA, Nachi, Yaskawa)

Robot compatibility

	UR e-Series	UR CB3	ABB	Denso	Doosan	Fanuc	Fanuc CRX	Hanwha	Kassow	Kawasaki	Kuka	Nachi	Omron TM	Techman	Yaskawa
Tool-conn.	✓	✓					✓		✓						
Compute Box	✓	✓	✓	✓	✓	✓	✓	✓	✓	✓	✓	✓	✓	✓	✓

Detailed overview of available functionality for all robot brands can be found on Robot device compatibility on the [Partner Portal](#), will be available from March 10th after release webinar.

Package content



Pricelist

Updated pricelist can be found [here](#).

Value propositions

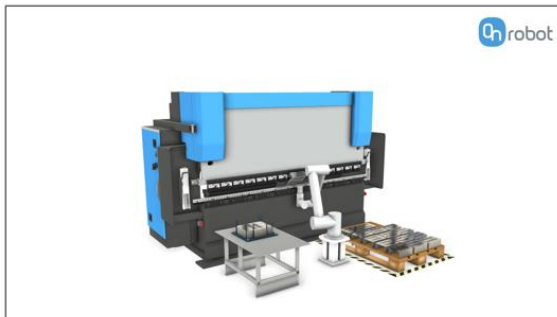
- Electric magnetic gripper offers fast out-of-the-box deployment without the complexity and costs of external air supply
- Built-in intelligence with easily adjustable force and part detection ensures reliable handling of a wide range of part sizes and weights
- Fast, compact and customizable gripper to fit all your application needs
- Ensure safe and reliable operation by maintaining grip even after power loss or emergency stop

Application Video Guide

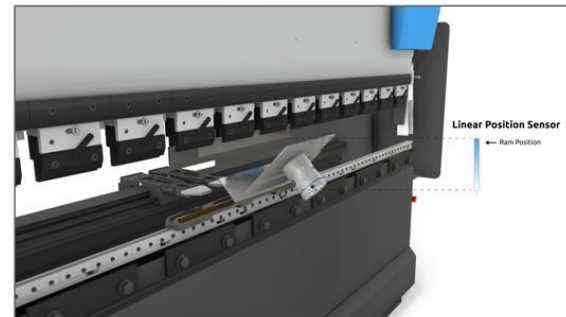
New Press Brake Machine Tending Application Video Guide featuring MG10.

3D-Animated instructional videos that take the user through the process of deploying a Press Brake Machine Tending application from beginning to end.

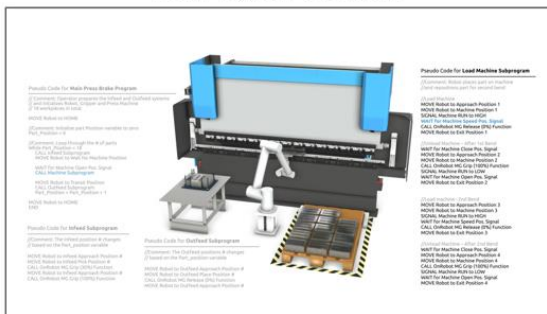
What to Expect



Press Brake Automation



Full Program Overview



- ✓ Lower Automation Barrier
- ✓ Reduce Deployment Time
- ✓ Highlight OnRobot Benefits
- ✓ Step-by-Step Learning

Available on the website from March 11th

Technical Files on Sharepoint

Updated USB-stick files: [v1.30 – MG10 + fixes + CB 5.7.0.7](#)

Content

- Compute Box / Eye Box software update v5.7.0.7
- Universal Robots URCap v5.7.1
- Techman TMFlow Component v1.7.0
- OMRON TM TMFlow Component v1.7.0
- Hanwha Rodi X plugin v5.7.0
- KUKA installer v5.7.0
- Kassow CBUN v5.7.0
- FANUC CRX Plugin v1.0.0 (for MG10)
- EPSON v5.7.0
- Scripts v1.7.0 (ABB, Denso, FANUC, Kawasaki, KUKA, Nachi, Yaskawa)