

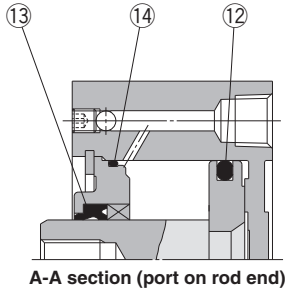
# Series CQP2

ø12, ø16, ø20, ø25  
ø32, ø40, ø50, ø63  
ø80, ø100

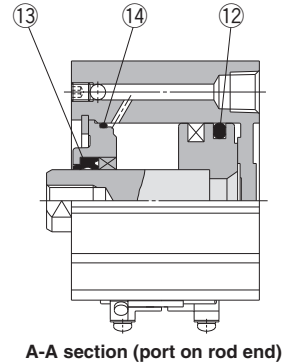
Replacement  
Procedure is  
P.290

## Construction

### Without auto switch



### With auto switch



\* The numbers are the same as the "Construction" of the CQ2 series catalog (CAT.ES20-205).

### Seal Kit List

No.	Description	Material	Note
⑫	Piston seal	NBR	
⑬	Rod seal		
⑭	Gasket		

### Replacement Parts: Seal Kit

Bore size (mm)	Kit no.	Contents
<b>Pneumatic type (non-lube)</b>		
12	CQ2B12-PS	Set of left nos. ⑫, ⑬, ⑭.
16	CQ2B16-PS	
20	CQ2B20-PS	
25	CQ2B25-PS	
32	CQ2B32-PS	
40	CQ2B40-PS	
50	CQ2B50-PS	
63	CQ2B63-PS	
80	CQ2B80-PS	
100	CQ2B100-PS	
<b>Air-hydro type</b>		
20	CQ2BH20-PS	Set of left nos. ⑫, ⑬, ⑭.
25	CQ2BH25-PS	
32	CQ2BH32-PS	
40	CQ2BH40-PS	
50	CQ2BH50-PS	
63	CQ2BH63-PS	
80	CQ2BH80-PS	
100	CQ2BH100-PS	

\* Seal kit includes ⑫, ⑬, ⑭. Order the seal kit, based on each bore size.  
\* Since the seal kit does not include a grease pack, order it separately.  
**Grease pack part no.: GR-S-010 (10 g)**

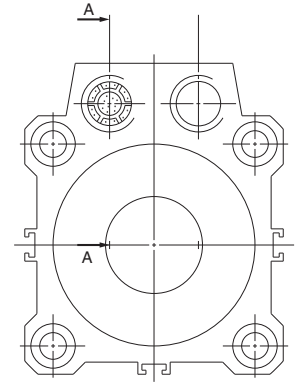
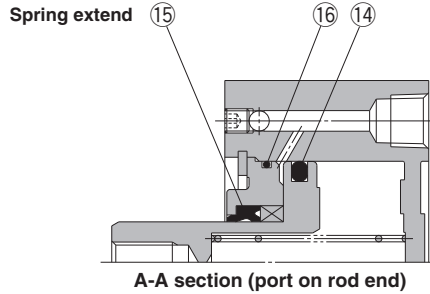
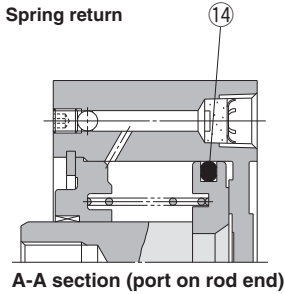
# Series CQP2

ø12, ø16, ø20, ø25  
ø32, ø40, ø50

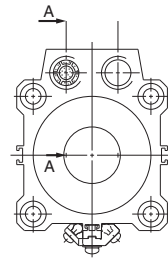
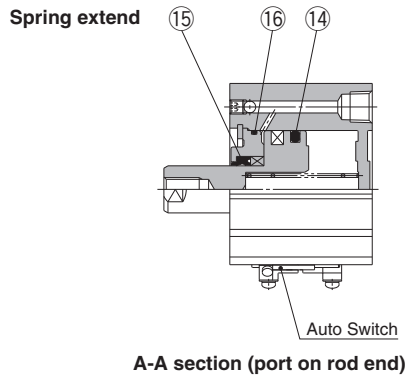
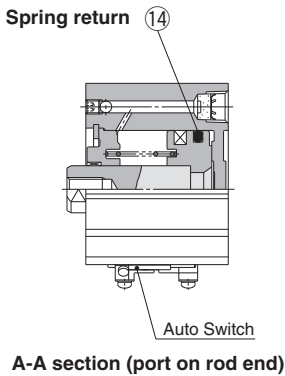
Replacement  
Procedure is  
P.290

## Construction

### Without auto switch



### With auto switch



\* The numbers are the same as the "Construction" of the CQ2 series catalog (CAT.ES20-205).

### Seal Kit List

No.	Description	Material	Note
14	Piston seal	NBR	
15	Rod seal		
16	Gasket		

### Replacement Parts: Seal Kit

Bore size (mm)	Kit no.	Contents
<b>Single acting, spring return</b>		
12	CQ2B12-S-PS	Set of left nos. 14.
16	CQ2B16-S-PS	
20	CQ2B20-S-PS	
25	CQ2B25-S-PS	
32	CQ2B32-S-PS	
40	CQ2B40-S-PS	
50	CQ2B50-S-PS	

\* Seal kit includes 14. Order the seal kit, based on each bore size.  
\* Since the seal kit does not include a grease pack, order it separately.  
**Grease pack part no.: GR-S-010** (10 g)

### Replacement Parts: Seal Kit

Bore size (mm)	Kit no.	Contents
<b>Single acting, spring extend</b>		
12	CQ2B12-T-PS	Set of left nos. 14, 15, 16.
16	CQ2B16-T-PS	
20	CQ2B20-T-PS	
25	CQ2B25-T-PS	
32	CQ2B32-T-PS	
40	CQ2B40-T-PS	
50	CQ2B50-T-PS	

\* Seal kit includes 14, 15, 16. Order the seal kit, based on each bore size.  
\* Since the seal kit does not include a grease pack, order it separately.  
**Grease pack part no.: GR-S-010** (10 g)