

# Auto Feed Lube, Auto Feed Tank

## ALF400 to 900, ALT-5/-9

### Standard Specifications

| Model  | Auto feed lube                                    |           |          |        |                          |        | Auto feed tank                                |                                    |                |                                    |
|--|---|-----------|----------|--------|--------------------------|--------|---|------------------------------------|----------------|------------------------------------|
|  | ALF400  | ALF400-06 | ALF500   | ALF600 | ALF800                   | ALF900 | ALT-5   | ALT-5-IS <sup>1</sup> <sub>2</sub> | ALT-9          | ALT-9-IS <sup>1</sup> <sub>2</sub> |
| Port size  | 1/4<br>3/8<br>1/2                                 | 3/4       | 3/4<br>1 | 1      | 1 1/4<br>1 1/2           | 2      | AIR: 1/4<br>OIL: 3/8                          |                                    |                |                                    |
| Fluid  | Air   |           |          |        |                          |        |   |                                    |                |                                    |
| Proof pressure   | 1.5 MPa   |           |          |        |                          |        |   |                                    |                |                                    |
| Max. operating pressure  | 0.7 MPa   |           |          |        |                          |        | 1.0 MPa                                       |                                    |                |                                    |
| Operating pressure differential range <sup>(1)</sup><br>(Difference between tank pressure and line pressure) | 0.1 to 0.6 MPa                                    |           |          |        |                          |        | —   |                                    |                |                                    |
| Vibration resistance<br>(Pressure differential 0.3 MPa)  | 1 G (9.81 m/sec <sup>2</sup> ) or less            |           |          |        |                          |        | —   |                                    |                |                                    |
| Min. operating flow <sup>(2)</sup><br>(l/min (ANR))  | 1/4: 65<br>3/8: 100<br>1/2: 120                   | 120       | 190      | 220    | 1 1/4: 460<br>1 1/2: 650 | 1800   | —   |                                    |                |                                    |
| Bowl capacity (cm <sup>3</sup> ) <sup>(3)</sup><br>(Capacity between levels)                                 | —   |           |          |        |                          |        | 5000<br>(4400)                                | 5000<br>(3400)                     | 9000<br>(7800) | 9000<br>(6000)                     |
| Recommended lubricant  | Turbine oil Class 1 (With no additives), ISO VG32 |           |          |        |                          |        |   |                                    |                |                                    |
| Ambient and fluid temperature  | -5 to 60°C (No freezing)                          |           |          |        |                          |        |   |                                    |                |                                    |
| Bowl material  | Polycarbonate                                     |           |          |        |                          |        | Metal (Steel tubing for machine construction) |                                    |                |                                    |
| Weight (kg)  | 0.85  | 0.88      | 1        | 1.15   | 1.85                     | 1.9    | 12.6  | 13.2                               | 26.0           | 26.6                               |
| Accessory (Standard)   | Bowl guard  | ●         | ●        | ●      | ●                        | ●      | ●   | —                                  |                |                                    |

- Note 1) Tank pressure is the pressure of Auto Feed Tank and line pressure is the pressure of Auto Feed Lube.  
 Note 2) Conditions: Inlet pressure 0.5 MPa, 5 drops/min, Turbine oil class 1 (with no additives) ISO VG32, Temperature 20°C, Needle fully open. Use air consumption rate for minimum operating flow.  
 Note 3) Capacity between levels: in the case of float switch equipped model, the capacity is measured in levels between the level gauge upper limit and the lower limit of the float switch detectable range.

The problem of running out of oil is prevented because the oil is fed automatically. This system makes lubrication work unnecessary, thus significantly reducing the amount of maintenance labor.

### Accessory (Option) Part No.

| Model<br>Description | Part no. |           |                          |        |        |        |
|----------------------|----------|-----------|--------------------------|--------|--------|--------|
|                      | ALF400   | ALF400-06 | ALF500                   | ALF600 | ALF800 | ALF900 |
| Bracket              | B44P     | B44-1P    | 3/4: B45-1P<br>1: B45-2P | B46P   | —      | —      |

- Note) A float switch can not be mounted on "ALT-5" or "ALT-9" afterwards.

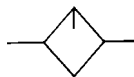


ALF400



ALT-9

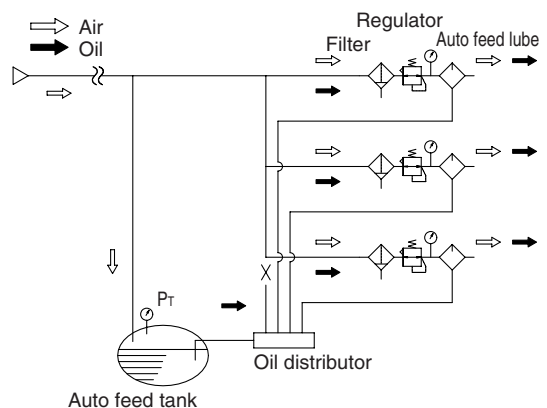
JIS Symbol  
Auto feed lube



Auto feed tank



Piping example



## How to Order

### <Auto Feed Lube>

**ALF 40 0** — **02** —

Auto Feed Lube

Body size

|    |       |
|----|-------|
| 40 | 1/2   |
| 50 | 3/4   |
| 60 | 1     |
| 80 | 1 1/2 |
| 90 | 2     |

Port size

|    |       |
|----|-------|
| 02 | 1/4   |
| 03 | 3/8   |
| 04 | 1/2   |
| 06 | 3/4   |
| 10 | 1     |
| 12 | 1 1/4 |
| 14 | 1 1/2 |
| 20 | 2     |

Thread type

|     |     |
|-----|-----|
| Nil | Rc  |
| N   | NPT |
| F   | G   |

Option

| Symbol | Description  | Applicable model |
|--------|--------------|------------------|
| Nil    | —            | —                |
| B      | With bracket | ALF400 to 600    |

### <Auto Feed Tank>

**ALT 5** — **IS-1**

Auto Feed Tank

Thread Type

|     |     |
|-----|-----|
| Nil | Rc  |
| N   | NPT |
| E   | G   |

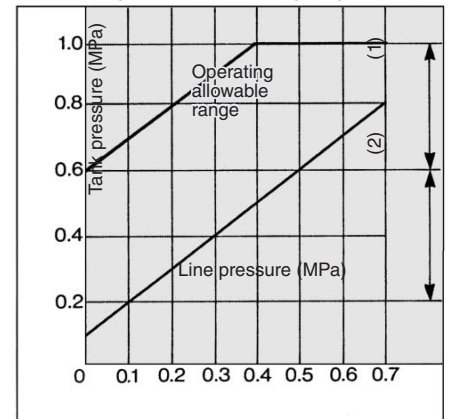
Tank capacity

|   |                           |
|---|---------------------------|
| 5 | 5000 cm <sup>3</sup> tank |
| 9 | 9000 cm <sup>3</sup> tank |

Option

|      |                                   |
|------|-----------------------------------|
| IS-1 | W/float switch (Bottom limit ON)  |
| IS-2 | W/float switch (Bottom limit OFF) |

### Operating Pressure Range



Note 1) Tank pressure is removed when line pressure is stopped.

Note 2) Tank pressure is kept same when line pressure is stopped possible to use.

## ⚠ Precautions

Be sure to read before handling. Refer to pages 14-21-3 to 14-21-4 for Safety Instructions and Common Precautions.

### Mounting

#### ⚠ Warning

If the pressure is discharged, the oil could flow back if the operating pressure differential range (the differential between the tank and line pressures) exceeds 0.6 MPa. Therefore, make sure to also discharge the tank pressure.

#### ⚠ Caution

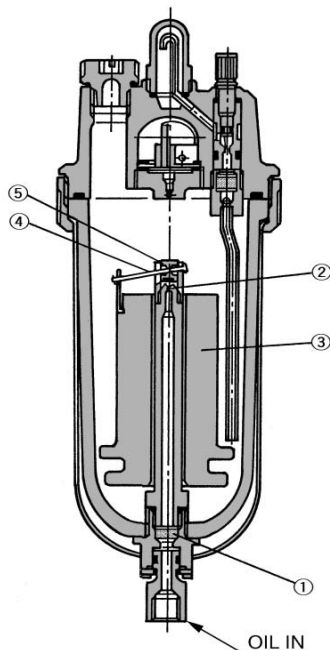
Install the float vertically inside the bowl so that it will not come into contact with the siphon tube, preventing the oil from dripping poorly.

### Maintenance

#### ⚠ Caution

Oil cannot be fed into Auto Feed Lube under being pressurized. We recommend oil is supplied from cam handle (plug for oil supply) of an auto feed tank.

### Working Principle/Auto Feed Lube



The oil that has been pumped from the tank passes through felt ① where it is filtered, and is fed into the case through nozzle ②. When the volume of oil reaches a certain level, float ③ ascends, valve ⑤ descends via lever ④, nozzle ② closes, and the feeding of oil stops, thus completing the oil feeding process. When the oil inside the case is consumed, float ③ descends, valve ⑤ ascends via lever ④, allowing oil to be fed from nozzle ②.

# Series ALF400 to 900, ALT-5, -9

## Construction: Auto Feed Lube

### ALF400

### ALF800/900

### ALF500/600

**JIS Symbol**

### Replacement Parts

| No. | Description           | Material       | Part no.  |           |               |               |                                |               |
|-----|-----------------------|----------------|---|-----------|---------------|---------------|--------------------------------|---------------|
|     |                       |                | ALF400  | ALF400-06 | ALF500        | ALF600        | ALF800                         | ALF900        |
| ③   | Auto feed             | —              | ALF-3   | ALF-3     | ALF-3         | ALF-3         | ALF-3                          | ALF-3         |
| ④   | Sight dome            | Polycarbonate  | 12316   | 12316     | 12316         | 12316         | 12316                          | 12316         |
| ⑤   | Damper assembly       | —              | 123122-3A (1/2)<br>123122-2A (3/8)<br>123122-1A (1/4) | 123122-3A | 123210A       | 123310A       | 123417A (1/4)<br>123416A (1/2) | 12356A        |
| ⑥   | Needle stud assembly  | —              | 123128PA  | 123128PA  | 123128PA      | 123128PA      | 123128PA                       | 123128PA      |
| ⑦   | Needle guide assembly | —              | 123129A   | 123221A   | 123292A       | 123314A       | —                              | —             |
| ⑧   | Retainer assembly     | —              | 123182  | 123182    | 12325A        | 12335A        | 123032                         | —             |
| ⑨   | Siphon tube assembly  | —              | 124230  | 124230    | 124231        | 124232        | 124232                         | 124232        |
| ⑩   | Sight dome seal       | Urethane resin | 12318   | 12318     | 12318         | 12318         | 12318                          | 12318         |
| ⑪   | Siphon nut seal       | Urethane resin | 123111  | 123111    | 123111        | 123111        | 123111                         | 123111        |
| ⑫   | Damper retainer seal  | NBR            | 123126  | 123126    | 123213        | 123313        | 123011                         | —             |
| ⑬   | Bowl O-ring           | NBR            | 113136  | 113136    | 113136        | 113136        | 113136                         | 113136        |
| ⑭   | Housing O-ring        | NBR            | —   | —         | JIS B 2401G80 | JIS B 2401G90 | JIS B 2401G90                  | JIS B 2401G90 |

### Component Parts

| No. | Description | Material            |                     |                 | Note                    |
|-----|-------------|---------------------|---------------------|-----------------|-------------------------|
|     |             | ALF400,400-06       | ALF500/600          | ALF800/900      |                         |
| ①   | Body        | Aluminum die-casted | Aluminum casted     | Aluminum casted | Platinum silver painted |
| ②   | Housing     | —                   | Aluminum die-casted | —               | Platinum silver painted |

## Construction: Auto Feed Tank

### ALT-5/9

**Working principle/Auto Feed Tank**

By turning cam handle ① 90° clockwise, valve ② opens, allowing the air that has entered from the IN side to be introduced into the tank. Due to the air pressure, the oil in the tank passes through felt ③ and exits from the OUT side. Turning cam handle ① 90° counterclockwise stops the air from the IN side, thus stopping the feeding of the oil.

**JIS Symbol**

### Component Parts

| No. | Description  | Material        | Note                    |
|-----|--------------|-----------------|-------------------------|
| ①   | Top cover    | Aluminum casted | Platinum silver painted |
| ②   | Bottom cover | Aluminum casted | Platinum silver painted |
| ③   | Case         | STKM            | Platinum silver painted |

# Auto Feed Lube, Auto Feed Tank Series ALF400 to 900, ALT-5, -9

## Dimensions: Auto Feed Lube

### ALF400

### ALF800/900

### ALF500/600

| Model     | Port size D   | A   | B     | C  |
|-----------|---------------|-----|-------|----|
| ALF400    | 1/4, 3/8, 1/2 | 80  | 238.5 | 44 |
| ALF400-06 | 3/4           | 85  | 246.5 | 46 |
| ALF500    | 3/4, 1        | 90  | 295.5 | 48 |
| ALF600    | 1             | 100 | 319.5 | 51 |
| ALF800    | 1 1/4, 1 1/2  | 100 | 338.5 | 59 |
| ALF900    | 2             | 100 | 344.5 | 63 |

- F.R.L.
- AV
- AU
- AF
- AR
- IR
- VEX
- AMR
- ITV
- IC
- VBA
- VE□
- VY1
- G
- PPA
- AL

## Dimensions: Auto Feed Tank

### Float switch

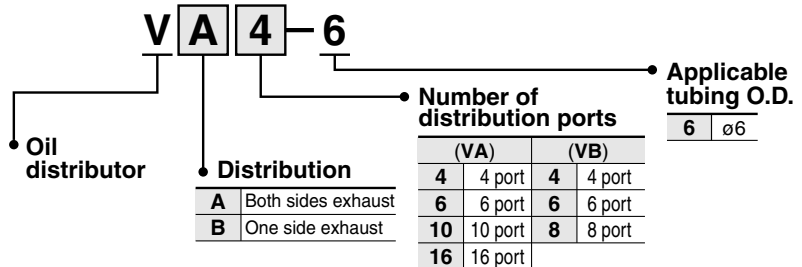
Contact point capacity: AC: 15 VA, DC: 15 W  
Contact point construction: 1a, 1b

| Model    | A   | B   | C  | D | E   | F   | G  | H  | I   | J   | K   | L   |
|----------|-----|-----|----|---|-----|-----|----|----|-----|-----|-----|-----|
| ALT-5    | 174 | 70  | 16 | 7 | 91  | 182 | 15 | 24 | 382 | 414 | 428 | —   |
| ALT-5-IS | 174 | 70  | 16 | 7 | 91  | 182 | 15 | 24 | 382 | 414 | 428 | 449 |
| ALT-9    | 234 | 108 | 30 | 7 | 121 | 242 | 16 | 40 | 422 | 472 | —   | —   |
| ALT-9-IS | 234 | 108 | 30 | 7 | 121 | 242 | 16 | 40 | 422 | 472 | —   | 482 |

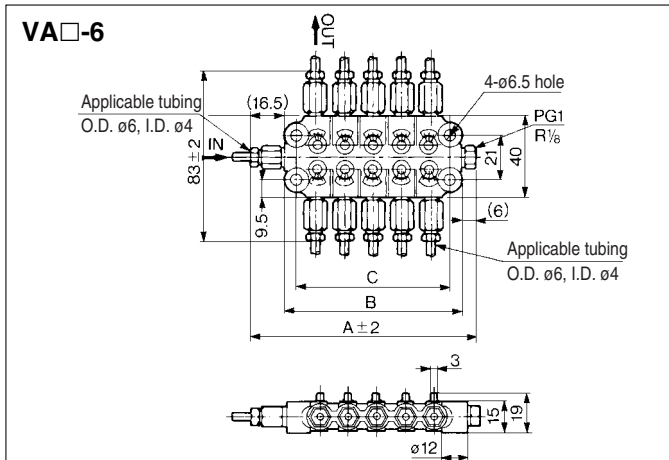
# Oil Distributor VA, VB/Nylon Tubing Related Products:

## Oil Distributor Series VA, VB

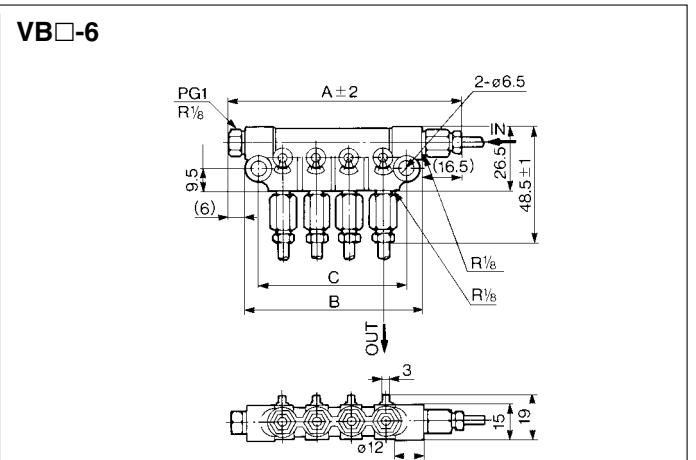
### How to Order



### Dimensions



| Model  | Number of distribution ports | A     | B    | C   | Applicable tubing |
|--------|------------------------------|-------|------|-----|-------------------|
| VA4-6  | 4                            | —     | 36.5 | —   | ø6                |
| VA6-6  | 6                            | 82.5  | 60   | 48  |                   |
| VA10-6 | 10                           | 110.5 | 88   | 76  |                   |
| VA16-6 | 16                           | 152.5 | 130  | 118 |                   |



| Model | Number of distribution ports | A     | B   | C   | Applicable tubing |
|-------|------------------------------|-------|-----|-----|-------------------|
| VB4-6 | 4                            | 96.5  | 74  | 62  | ø6                |
| VB6-6 | 6                            | 124.5 | 102 | 90  |                   |
| VB8-6 | 8                            | 152.5 | 130 | 118 |                   |

Note) Insert seal plug (PG1) into the distribution port which is not used.

### Nylon Tubing



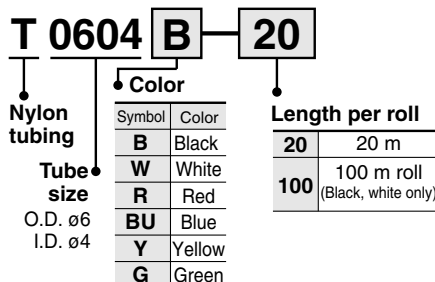
T0604

### Specifications

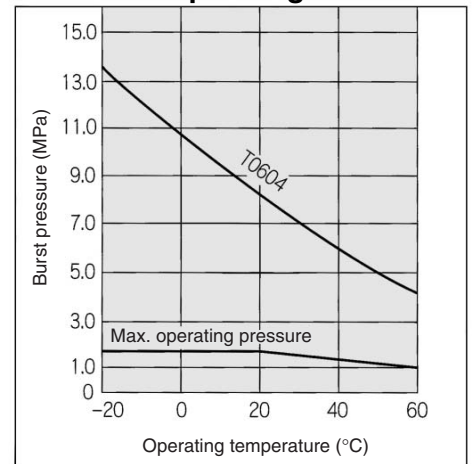
| Model                                     | T0604  |
|---|--|
| Max. operating pressure                   | 1.5 MPa  |
| Burst pressure                            | Refer to the burst pressure characteristics curve. |
| Min. bending radius (mm) <sup>Note)</sup> | 24   |
| Operating temperature                     | -20°C to 60°C                                      |
| Material                                  | Nylon 12   |

Note) The value at temp. of 20°C and with O.D. variable rate 10% max.

### How to Order



### Burst Pressure Characteristics Curve and Operating Pressure



\* Maximum operating pressure is 1/3 max. of burst pressure at 60°C, considering the safety ratio.